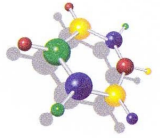




www.roadcoat.com



DEVELOPMENT



PRODUCTION



SPECIFICATION



INSTALLATION

ROADCOAT GmbH  
EN ISO 9001

# ROADCOAT CENTRO

## PARKDECK PROTECTIVE DRIVING SURFACE

### PERFORMANCE DATA

**CENTRO** protective driving surface fulfils the requirements of **BS EN 1504-2:2004 Surface protection systems for concrete** for the interior driving surfaces of Car Parks

An attractive and extremely tough, wear resistant driving surface for car park decks, ramps, turning areas and exits/entrances. It provides long term protection against deterioration through wear, moisture, salts, chemical and gas intrusion as well as freeze/thaw damage. **CENTRO** will fill and bond the normal shrinkage cracks which are present when the system is applied.

**CENTRO ENS: Enhanced Non-Slip** with aggregate 85% as hard as diamond.

#### **Track Record since 1966** including bridge deck driving surfaces

Concrete and Asphalt ..... > 4,500,000 m<sup>2</sup>  
Steel and Aluminium ..... > 1,500,000m<sup>2</sup>

#### **System Properties**

Protects the structure  
Absolute adhesion  
Exceptional wear resistance  
Anti-Skid Anti-Slip  
Easy to repair if damaged

An aesthetic upgrade  
Any colour(s) possible  
Easy to clean  
Permanent marking & floor signage available

#### **Standard Colours**

Dusty Grey Traffic Blue RAL 5017 Signal Yellow RAL1003  
Anthracite RAL 7016 Traffic Green RAL 6024 White

#### **Skid/Slip resistance**

**CENTRO** fulfilling the requirements for pedestrian and vehicle slip/skid resistance.

#### **Chemical Resistance**

To petrol, diesel, oils, battery acid, salts, urea, soaps and detergents.

#### **Flammability**

Flame self-extinguishes within 60 seconds – DIN 4102

#### **Quality-Control**

**ROADCOAT** materials are developed and manufactured to **EN ISO 9001**.